

DPI Naming

For the 2010-2011 season entries for the Open & Set subject Digital Projected Image competitions will need to be named in the following way.

Open Competitions: Open_Authors Name_Image Title.jpg i.e. Open_Joe Bloggs_My Picture.jpg

Set Competitions: Set_Authors Name_Imge Title.jpg i.e. Set _Joe Bloggs_My Picture.jpg

Each element of the file name must be separated by the underscore '_' character. On a standard QWERTY keyboard, this is shift and the minus '-' key as shown below.

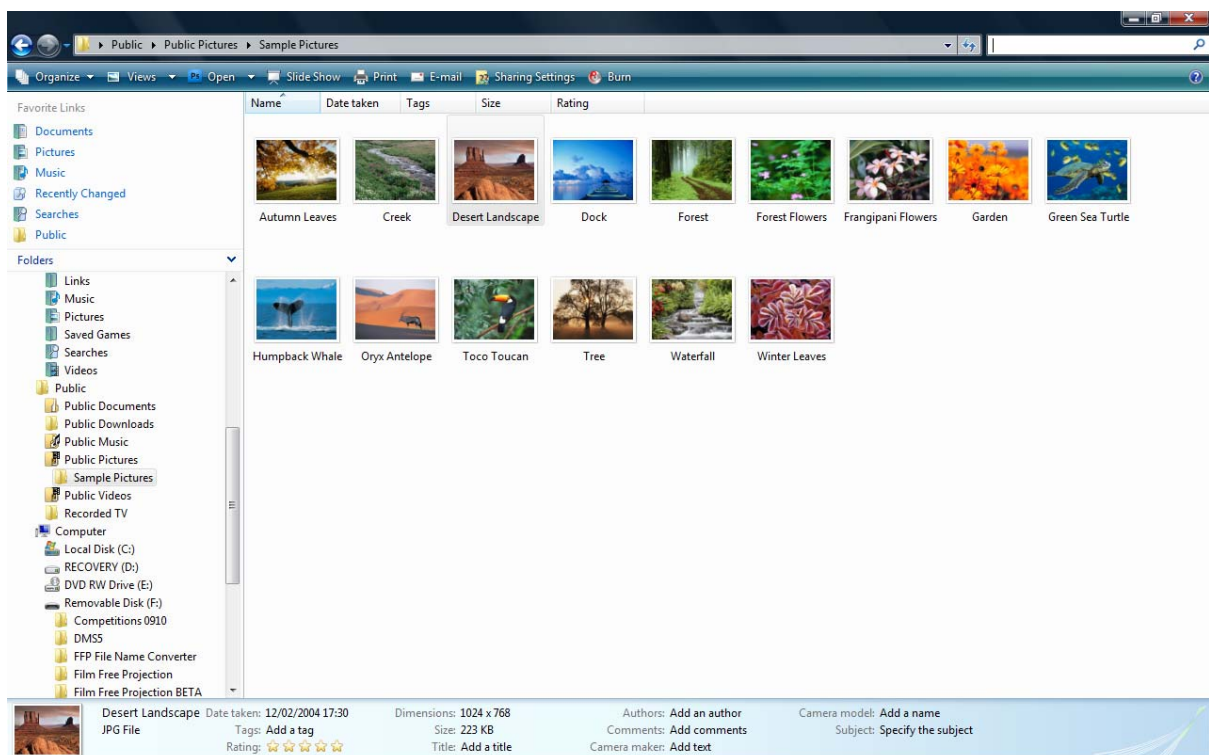


Setting the META data for DPIs

Entries for the Open & Set subject Digital Projected Image competitions it would be useful for entrants to set the Title & Author meta data for the images they are submitting. Below is a guide on how to set the information in Windows 7, Vista & Windows XP/2000.

Windows 7 & Vista

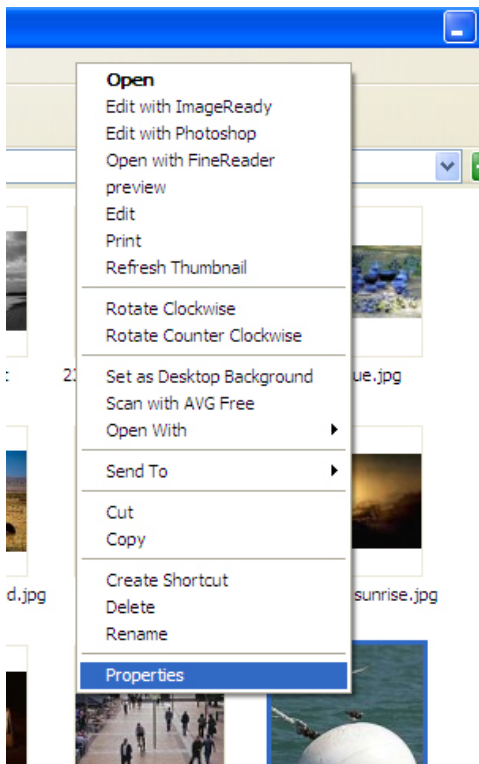
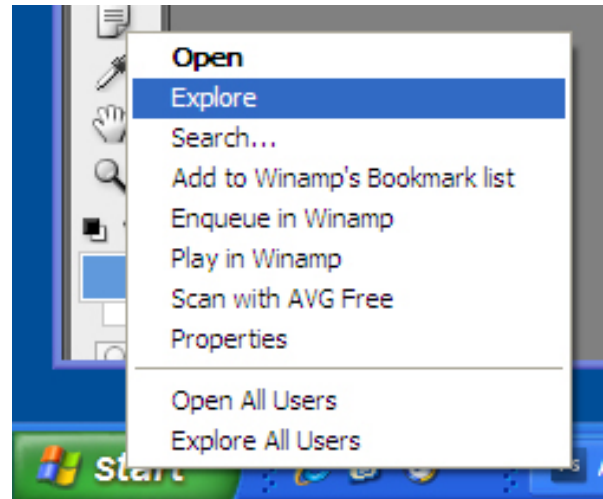
First, you will need to find the image(s) you intend to submit.



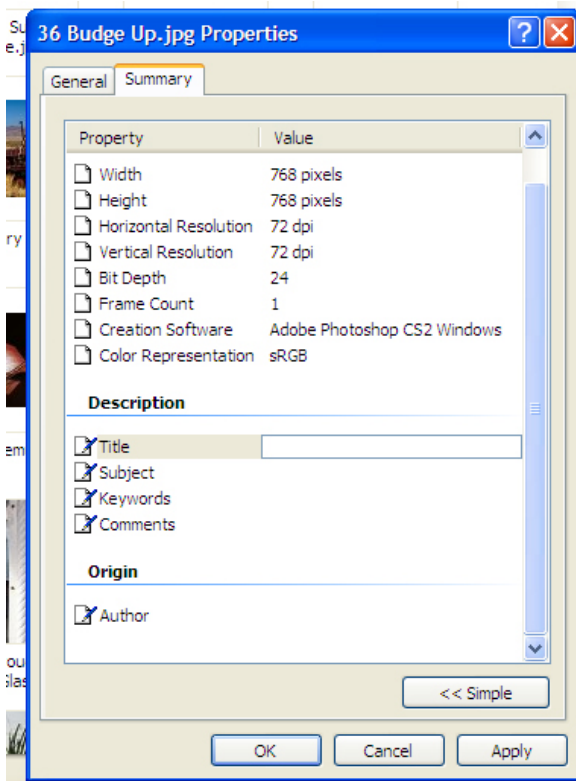
At the bottom of the screen click on the title field to enter your title and click on the author field to enter your name.

Windows XP/2000

First, you will need to find the image(s) you wish to submit. Either double click the My Computer icon on your desktop, or right click the Start Menu button, and select Explore from the menu. Then navigate to the folder that holds your images.



Find your image, right click on it, then select properties from the menu.



Then select the Summary tab at the top of the window.

Left Click to the left of the Title field, underneath value, and entered the title of your image.

Then left beside the Author field and enter your name.